

SUNCADIA PHASE 1 DIVISION 3

Ptn. E 1/2, SEC. 19, Ptn. SEC. 20, Ptn. W 1/2, SW 1/4, SEC. 21,
 Ptns. NW 1/4, NW 1/4 SEC. 28 & NE 1/4, NE 1/4, SEC. 29, TWP. 20 N., R. 15 E., W.M.
 KITTITAS COUNTY WASHINGTON

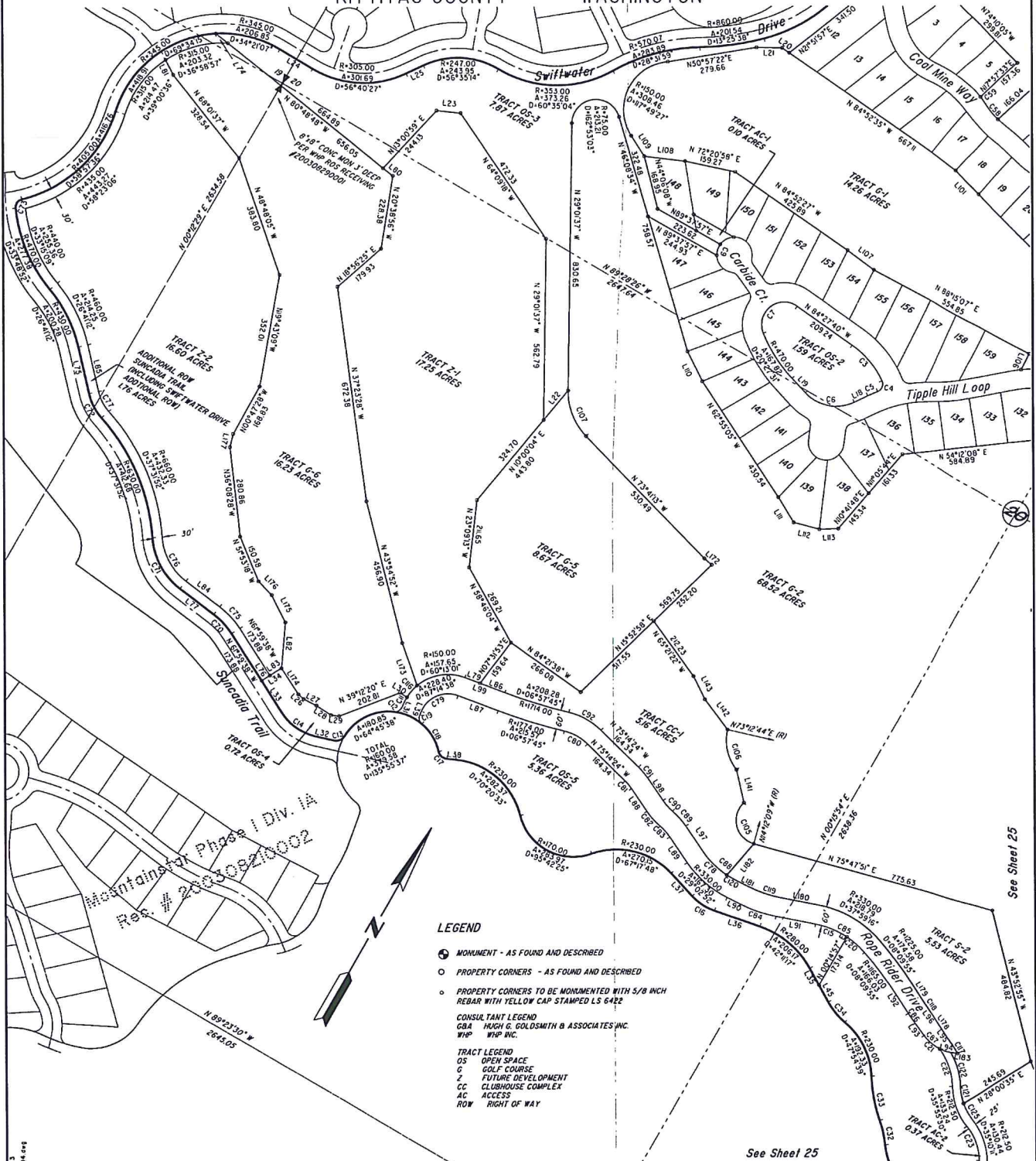
Auditor's File No.

200505040001

See Sheet 22

See Sheet 25

See Sheet 25



LEGEND

- MONUMENT - AS FOUND AND DESCRIBED
- PROPERTY CORNERS - AS FOUND AND DESCRIBED
- PROPERTY CORNERS TO BE MONUMENTED WITH 5/8 INCH REBAR WITH YELLOW CAP STAMPED LS 6422

CONSULTANT LEGEND
 GBA HUGH G. GOLDSMITH & ASSOCIATES INC.
 WHP WHP INC.

TRACT LEGEND
 OS OPEN SPACE
 G GOLF COURSE
 Z FUTURE DEVELOPMENT
 CC CLUBHOUSE COMPLEX
 AC ACCESS
 ROW RIGHT OF WAY

SCALE 1" = 200'



HUGH G. GOLDSMITH & ASSOCIATES
 INC.
 Engineering - Land Use Planning - Surveying

1215 114th Avenue SE, Bellevue, WA 98004, P.O. Box 3565, Bellevue, WA 98009
 OFFICE: (425) 462-1080, FAX: (425) 462-7719, staff@goldsmithengineering.com

SHEET 24 OF 27

VOLUME/PAGE 9/117

9-117